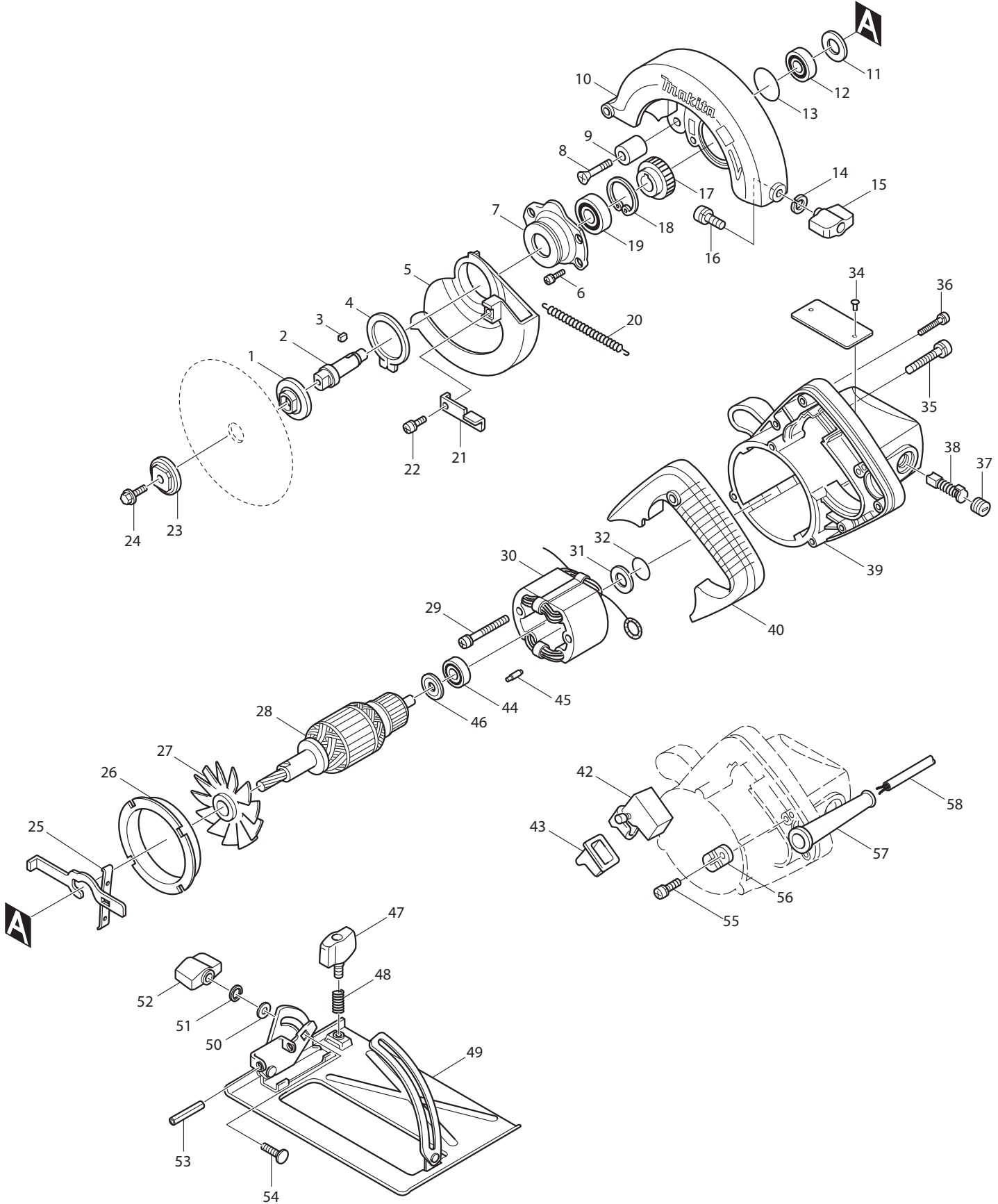




05 - 2010
5005BA
5-1/2" CIRCULAR SAW



Item No	Type	Ref	Part No	SC	Description	Qty	Unit
001			224131-3		INNER FLANGE 34(5/8")	1	PC.
002			321811-3		SPINDLE	1	PC.
003			254011-9		WOODRUFF KEY 4	1	PC.
004			961155-5		RETAINING RING S-38	1	PC.
005	2		319057-3		SAFETY COVER	1	PC.
006	2		251295-0		COUNTERSUNK HEAD SCREW M4X14 W/ADHESIVE	4	PC.
007			321767-0		BEARING BOX	1	PC.
008			251224-3		+ COUNTERSUNK HEAD SCREW M6X28	1	PC.
009			262501-8		RUBBER SLEEVE 6	1	PC.
010	3		142202-3		BLADE CASE	1	PC.
		INC.	214005-6		PLANE BEARING 8	1	PC.
		INC.	321062-8		321062-8 - HOOK PIN,	1	PC.
		INC.	817667-5		CAUTION LABEL (UNI)	1	PC.
		INC.	*****		Item No. 13	1	PC.
011			253069-5		FLAT WASHER 12	1	PC.
012			211101-1		BALL BEARING 6001LLB	1	PC.
013			213415-4		O RING 28	1	PC.
015			252624-0		WING NUT M6	1	PC.
016			251919-8		CAP SQUARE NECK BOLT M6X20	1	PC.
017			221738-6		HELICAL GEAR 44	1	PC.
018			962151-6		RETAINING RING R-32	1	PC.
019			211106-1		BALL BEARING 6201LLB	1	PC.
020			231730-4		TENSION SPRING 4	1	PC.
021			342836-4		LEVER	1	PC.
022			911111-5		P.H. SCREWM4X10	1	PC.
023	2		224427-2		OUTER FLANGE 34	1	PC.
024			265226-3		HEX. FLANGE HEAD BOLT M6X17	1	PC.
025			163227-4		SHAFT LOCK	1	PC.
026			343319-7		BAFFLE PLATE	1	PC.
027			241104-1		FAN 70	1	PC.
028	2		512831-0		ARMATURE ASSY	1	PC.
029			911681-4		P.H. SCREWM5X60	2	PC.
	Opt. 2		911285-2		P. H. SCREW M5X60 W/WASHER AND BOND	2	PC.
030			594146-7	*	FIELD ASSY	1	PC.
		INC.	654501-6	*	SOLDERLESS CONNECTOR P-1.25	2	PC.
		INC.	654019-7	*	GARTER SPRING	2	PC.
031			253192-6		FLAT WASHER 14	1	PC.
032			213262-3		O RING 18	1	PC.
033			854L87-4		NAME PLATE F/ 5005BA	1	PC.
034			953106-2		RIVET 0-5 (No longer used)	2	PC.
035			911263-2		P.H. SCREWM5X40	3	PC.
036			911148-2		P.H. SCREWM4X25	4	PC.
037			643600-9		BRUSH HOLDER CAP 6-10	2	PC.
038	2		194982-7		CARBON BRUSH CB-124, 2PCS/SET (W/ ORIGIN)	1	SET
039	2		159231-9		MOTOR HOUSING COM.	1	PC.
		INC.	643603-3	*	BRUSH HOLDER 6-10	2	PC.
		INC.	913206-0	*	SET SCREW M5X8	2	PC.
040			414712-3	*	HANDLE COVER(W/LOCK)	1	PC.
042			651243-3	*	SWITCH SGES115F-1, SINGLE, W/LOCK-OFF	1	PC.
043			421142-1		SWITCH COVER	1	SET
044			211033-2		BALL BEARING 608LB	1	PC.
045			263014-2		RUBBER PIN 4	1	PC.
046			681625-5		INSULATION WASHER	1	PC.
047			251858-2		SCREW M6X15	1	PC.
048			231316-4		COMPRESSION SPRING 7	1	PC.
049			163226-6		BASE	1	PC.
050			941151-9		FLAT WASHER 6	1	PC.
052			252624-0		WING NUT M6	1	PC.
053			951225-8		SPRING PIN 6-40	1	PC.
054			251919-8		CAP SQUARE NECK BOLT M6X20	1	PC.
055	2		911133-5		P.H. SCREWM4X18	2	PC.
056			687002-9		STRAIN RELIEF	1	PC.
057			682502-4		CORD GUARD 8-85	1	PC.

Item No	Type	Ref	Part No	SC	Description	Qty	Unit
058			664064-4		CORD W/PLUG 2P-18-2.5M, SJ	1	PC.
902			810149-6		CAUTION LABEL	1	PC.
C01			828859-1		CARTON	1	PC.
E01			654509-0	*	CONNECTOR 2-SD	1	PC.
<u>ACCESSORIES</u>		- See Catalogue or visit www.makita.ca for other optional accessories -					
A01			164095-8		GUIDE RULE	1	PC.
A02			782209-3		SOCKET WRENCH 9	1	PC.
A03			792334-2		5-1/2" COMB. SAW BLD 50T(5/8")	1	PC.
			792335-0		5-1/2" C.T. SAW BLD 18T(5/8")	1	PC.
			792333-4		5-1/2" C-C SAW BLD 70T(5/8")	1	PC.
			792331-8		5-1/2" COMB. SAW BLD 24T(5/8")	1	PC.

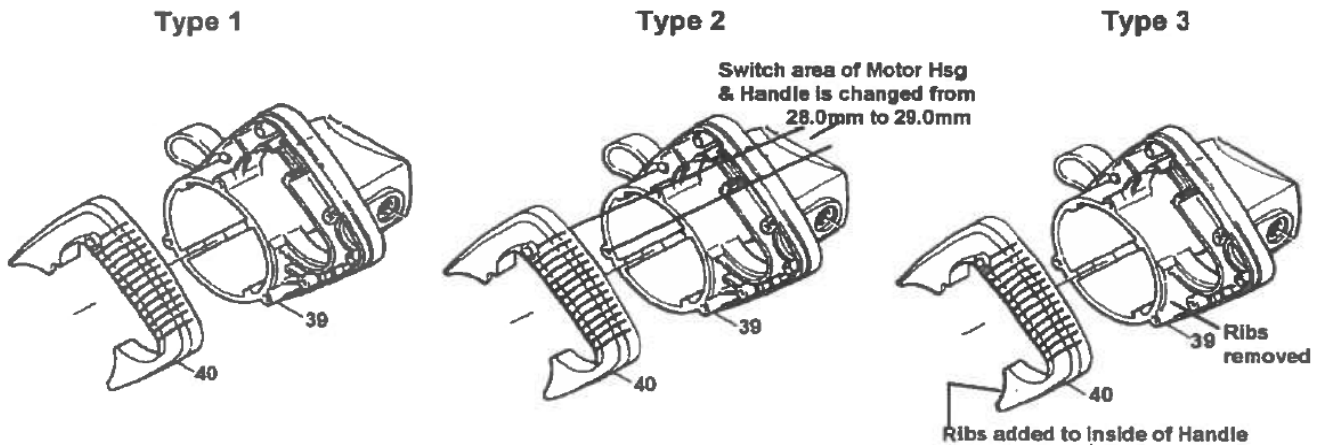
SERVICE CHANGES

1. Changes on Motor Housing & Handle Cover

Item No.	Description	Type 1	Type 2	Type 3	Type 4
39	Motor Housing	157508-6	157827-0	159230-1	159232-7 or 159231-9
40	Handle Cover	411371-4	414068-4	414712-3	
	Serial No.	~22521E	22522E~36772E	36773E~	

Above parts are completely interchangeable as a set.

Type 2 Motor Housing & Handle Cover also fit Type 1 Handle Cover & Motor Housing



2. Changes on Filed Assy and Switch

Item No.	Description	Type 1	Type 2
30	Field Assy	622611-7	594146-7
42	Switch	651331-6	651243-3
E01	Connector 2-SD	-----	654509-0
	Serial No.	~ 54037E	54038E ~

Above parts are completely interchangeable as a set.

Type 2 Switch can be used with Type 2 2 Field, if the Wiring is changed to match the Type 2 Wiring Diagram.

